

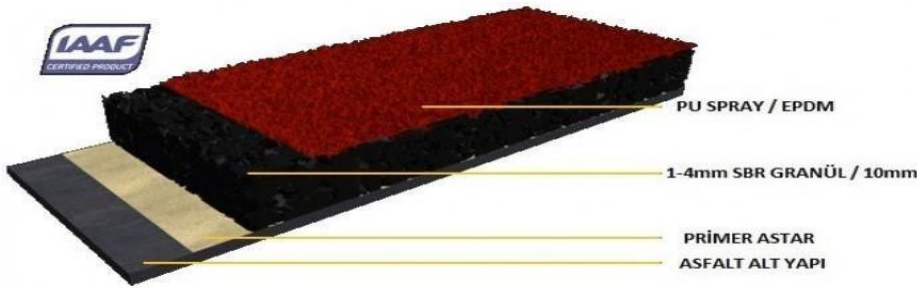


## Built for Performance

High performance flooring  
for sports fields and playgrounds



## Spray Coat Running Track System



### Consultation and Design:

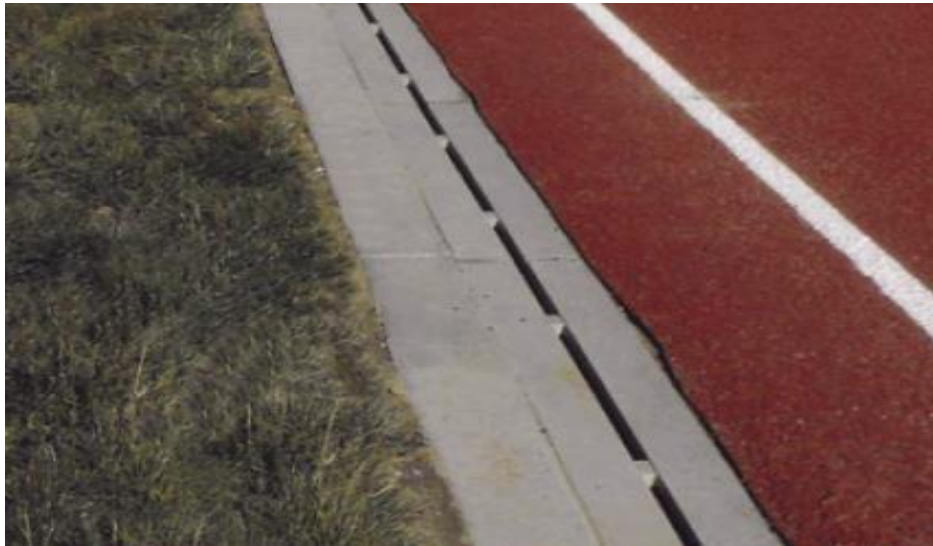
- Planning and design for the site is of vital importance to the performance and functionality of the facility. A site inspection, soils investigation and a meeting with all interested parties will constitute the first step in this process to identify the needs of the owner and of the site. From this, a CAD-generated drawing of the facility will be prepared.
- The soils investigation will recommend procedures to maximize the longevity of the asphalt paving. As asphalt is generally prone to cracking within a relatively short period of time, consideration may be given to a concrete substrate to maximize the lifecycle of the rubberized surface.



## Site work construction:

### A. Drainage:

The installation of a continuous interior collection channel provides all important drainage for running track and field, laser controlled dimension and elevation control, and serves as an interior curb. Kerb wall should be parallel or down to the top surface of asphalt



### B. Curbing:

Curbing provides a buffer between the running track and the surrounding area. It may be used on the outside perimeter of the track, the D-zone, or to edge asphalt event areas



### C. Paving:

The track oval normally consists of an aggregate base course and hot mix asphalt or post-tensioned concrete as specified by a soils engineer and applied to insure proper surface tolerance, slope, and grade.



### D. Asphalt Parameter:

**Excavation:** Excavate the surface to create slope of 1" for every 10' on shorter axis

**Compaction:** Compaction of Sub Base with 8-10 tone roller

**Anti Termite and Weed Growth:** Carryout anti termite and weedicide on the total area by applying chemicals and spraying

#### **Wet Mix Macadam - 200mm:**

Providing and laying of compacted 200mm thickness of WMM in one layer as per specifications and drying up and cleaning the surface

BITUMINOUS MACADAM (Bitumen @2.5 % by weight) Lay a 40mm compacted thick

Hot Mix asphalt BM cours with Bitumen grade 80/100

ASPHALTIC CONCRETE (Bitumen @3.5 % by weight)

Lay a 25mm compacted thick Hot Mix A.C. course with Bitumen grade 80/100

**SEAL DUST:** Seal dust to be spread to cover all the voids

### Spray coat Running Track Method:

**Structure:** 3mm thickness EPDM color top layer plus 12mm thickness SBR rubber particle on the Bottom

**1<sup>st</sup> Layer:** Primer Coating layer (Desmotop-RR 2012 PU primer)

**2<sup>nd</sup> Layer:** SBR Layer (100% Recycling Rubber)

**3<sup>rd</sup> Layer:** Spray coat EPDM layer (Elastic EPDM granules + Desmotop C301 Colored PU)

### **Dosage:**

Athletic Running Track material 15 mm		Quantity Kg/M2
Primer coat	Desmotop-RR 2012 PU primer	0.250
Base Rubber layer	1-4mm Recycle SBR granule	6.000
	Desmotop-RR 2008 PU binder	1.000
Surface-Spray coatLayer	Desmotop C301 Red PU Spray-coat material : Red color paste component B mix binder component A in weight A: B=1:2	1.300
	Red 0.5-1.5mm EPDM granule	0.700
Line Marking	White PU 3:1 Lining material Desmotop C305 A: B 4 :1	0.020

## IAAF NOMS:

Test Item	Reference	Standard Data	Test Result
Product			Track
Thickness	13 mm or customized		
Tensile	IAAF	≥0.4	1.23
Elongation at Break	IAAF	≥40	86
Force Reduction	IAAF	35-50	41
Vertical Deformation	IAAF	0.6-2.2	2.1
Skid Resistance	IAAF	≥47	57
Hardness Shore	GB/T 14833-2011	45-60°	45-55°
Fire Rating	GB/T 14833-2011	I Degree	I Degree
Color Stability			Good
Chemical Resistance			Good
Tensile Strength	1.56		
Modified Vert. Deform	1.9 mm @ 23°C [75°F]		
Friction	0.64/48		
Permeability	Permeable		
Material	EPDM, SBR, Reclaimed Rubber, ETC.		
Features	Environmental-friendly, UV-resistance		
Life Span	5-- 10 years		



### **Properties / Product Advantages:**

- Fast installation with special paving machines
- Minimum injury risk
- Low maintenance costs
- Impermeable PUR/EPDM top layer
- UV and weather resistant
- Optimized force reduction
- Long lasting performance and durability
- Highly slip resistant & fully Spray coating system
- Optimal protection for the athletes
- Insitu base layer underlay: mix SBR granules with polyurethane binder



## Completion Project:

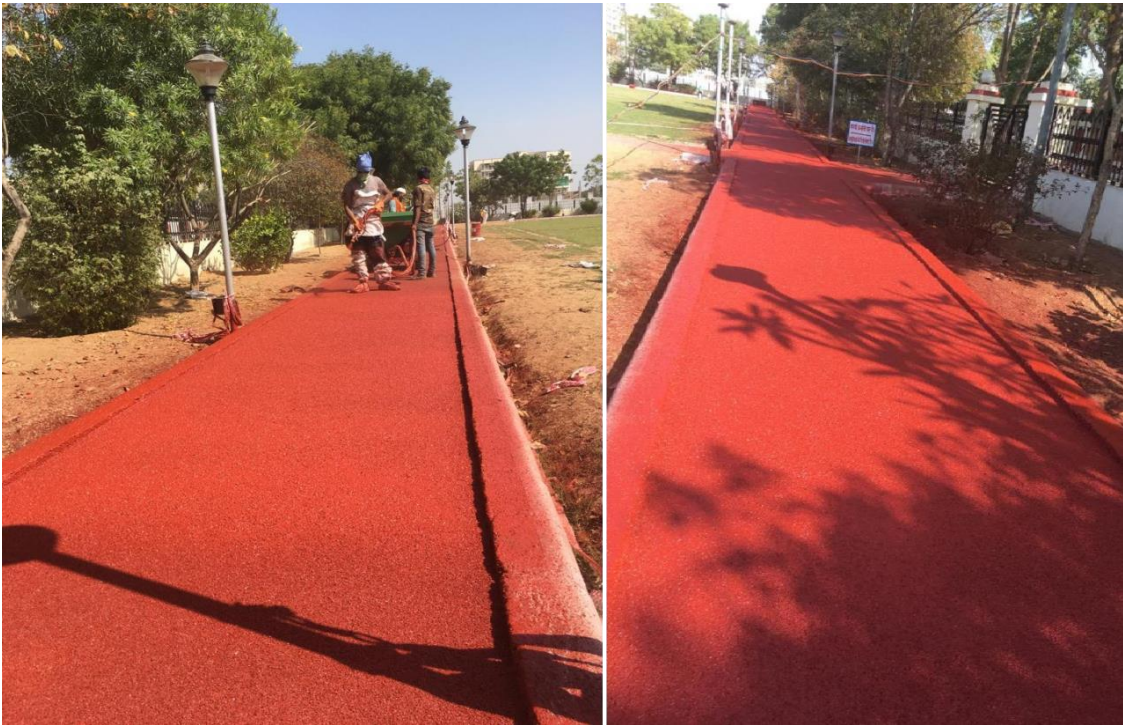
### 1. Sarita Udhyan Gandhinagar:



## 2. Augusta Delhi:



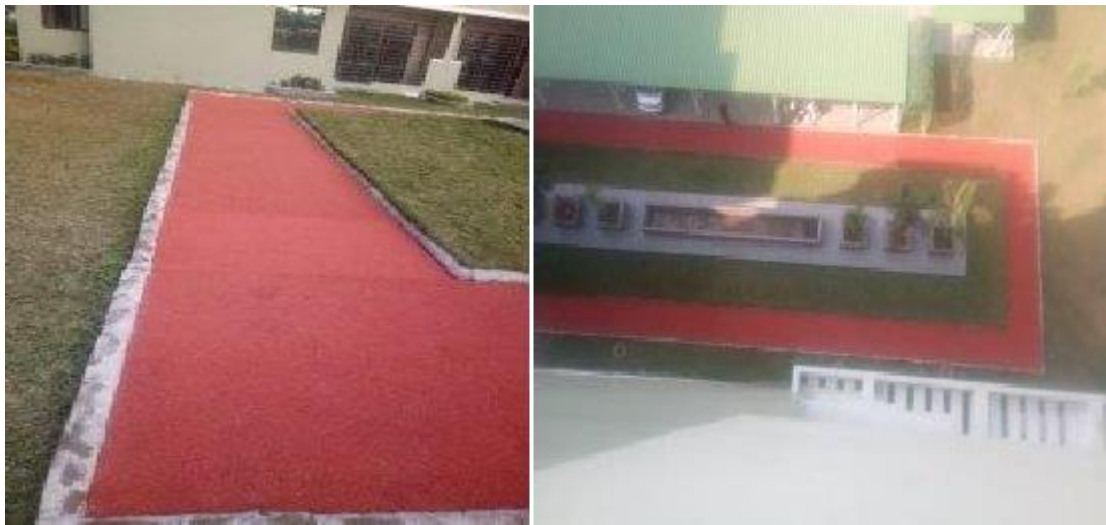
## 3. Railway Project Jaipur:



**4. YMCA International Club Ahmedabad:**



**5. Agrim Infra GUWAHATI ASSAM**



## 6. Smart City Gwalior MP



## IAAF Approved running Track

Narendra modi Cricket Stadium Ahmadabad



**Thanks & Regards**

**Team**

**TOPFLOOR SPORTS INFRA PVT LTD**